



CUBE

METAL INDUSTRIES CO.

مصنع شركة المكعب الدولي للصناعات الحديدية والالمنيوم المحدودة

01 OVERVIEW

03 DIFFERENTIATORS

04 OUR TEAM

05 OUR FACTORY

06 QUALITY POLICY

07 OUR SERVICES

09 OUR BUSINESS PARTNERS

10 OUR PRODUCTS

14 PROJECTS LIST



OVERVIEW

Cube Metal Industries is a certified ISO9001:2015 Facade Company registered and based in Jeddah (Saudi Arabia). We offer vertical integration services (design, fabrication and installation) of building envelopes in metal and glass.

Cube Metal Industries was established in 2007 as a family own business registered in the Jeddah Chamber of Commerce & Industry. Since its inception, we have opted to grow organically in the benefit of a healthy structure while making sure that the quality of the offering remains at a high standard. As an independent specialist contractor, our clients can be confident of receiving solutions that fit for their needs.

We provide building envelope packages offering the different benefits that working with a single source provider brings: improved efficiency, greater control, speed up build times, opportunities for value engineering, and rationalization of the design and construction process among others.

Our scope of work includes curtain wall systems, doors & windows, solar shading systems, skylights, aluminum composite cladding, canopies, aluminum masharabiyas, and steel fabrication.

We are organized around a simple set of systems and processes, objectives, and communications that enable us to successfully deliver projects. We follow standard operational frameworks, guidance and toolsets, all aimed at empowering our people, making good decisions and delivering projects as requested. Our work can be seen in offices and commercial buildings, stadiums, universities, hotels, schools and residential buildings across the Kingdom Saudi Arabia



MISSION & VISION

Our **vision** is to be the leading solution provider of building envelopes in the Kingdom of Saudi Arabia.

Our **mission** is to provide high quality building envelope solutions, outstanding service at a competitive price that exceed our client's expectation.

Our mission statement is articulated through:

- **Engaging** with national and international suppliers and business partners;
- **Ensuring** that our products and services meet regulatory standards and best practices that comply with all customers' requirements;
- **Offering** a comprehensive range of materials, finishes and solutions that satisfy customers' aspirations;
- **Having** a clear vision of our customers' requirements and to advise them in what is feasible;
- **Assure** that customers' orders are completed and delivered on time;
- **Keeping** customers informed on the progress of any business they entrust to us;
- **Using** the latest technologies and having some of the most advanced automated machinery in the industry;
- **Providing** relevant training to our staff, and giving them the opportunity to contribute to the continual improvement of our Quality Management Systems;
- **Commitment** of our employees.

VALUES

All Cube Metal Industries employees are encouraged to work by a clear set of values which drive everything we do:

- **Integrity:** We conduct our business with respect and honesty towards our employees, business partners and customers.
- **Reliability:** We aim to provide our customers with consistent reliable delivery.
- **Professionalism:** We act in a responsible, professional manner and take ownership of our decisions and actions.
- **Quality:** We promote continual development of our people, processes and policies to guarantee the highest quality service and product detail.
- **Passion:** We embrace every task with enthusiasm and pride.

It is our belief that adherence to our company values creates a better working environment for our employees in the benefit of our customers, business partners and all of those that interact with us.

DIFFERENTIATORS

RANGE OF SCOPE

As a design-build building enclosure systems contractor, Cube Metal Industries has created a unique model able to bring a broad range of building envelope products together to create smart solutions for our client's challenging problems. Our scope of work includes curtain wall systems, doors & windows, louvers, sun breakers, skylights, cladding, aluminum masharabiyas and steel fabrication.

EXCELLENT PROVEN TRACK RECORD

Cube Metal Industries is a young company that is building its strength in ensuring consistent attention to detail, resulting in a high quality finish. Our leadership is dynamic and has strong roots and experience in delivering building envelope projects with a proven track record of positive impact for our clients.

VERTICAL INTEGRATION

We are a vertical integrated building envelope contractor capable of incorporating all elements of a project from engineering design to fabrication and site erection. Our fully integrated model allows to manage projects from start to completion, and does not have middle-man. This makes our work cost effective and ensures we can monitor and maintain the high standards required for our projects. Additionally, our close relationship with suppliers ensures we always deliver quality to our clients.

OUTSTANDING SERVICE

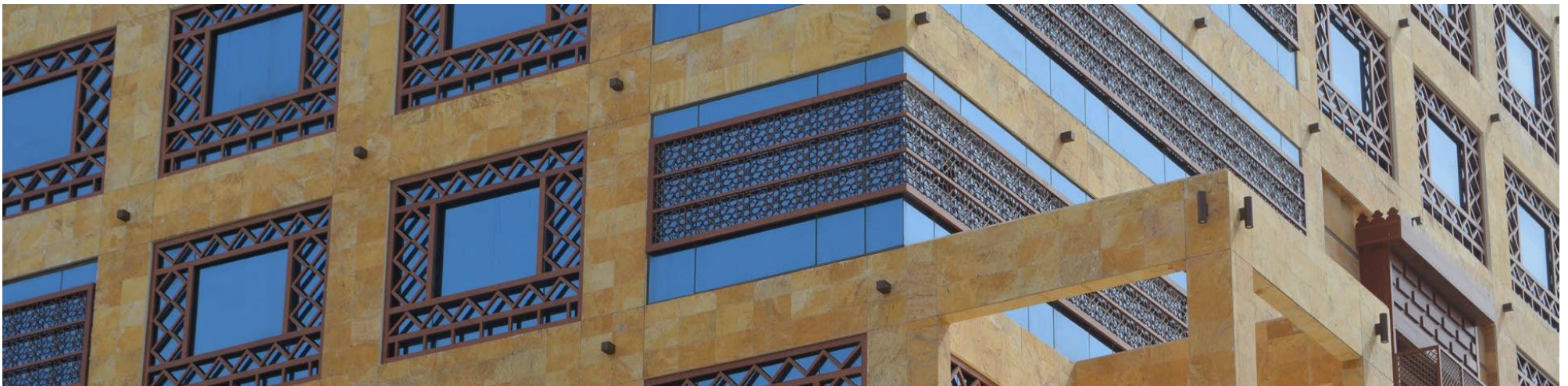
Our team of experience employees and our dynamic and modern nature keeps us up to date with the latest techniques, materials and technologies. Our commitment to service means our clients experience unmatched information, solutions and collaboration at every phase of the project. Our employees are well-trained and committed to producing top quality work. Our commitment to service distinguishes us from our competition.

QUALITY PRODUCTS

The adage "you get what you pay for" is very true with glass, metal and sealant products. Our international recognized supply chain partners play an integral part in helping us to achieve our client delivery and quality promises and our collective success. Close collaboration with our supply chain partners, who are embedded in our project team at the earliest stage of our contracts, has proved vital in identifying value-engineering opportunities that ultimately benefit the project and the client.

MANAGEMENT & COOPERATION

Challenging goals, respectful interaction with clients and employees as well as trusting and committed behavior are essential elements for extraordinary projects – and even more important for successful cooperation! Cube Metal Industries is target-oriented and our clear demarcation of responsibility allows optimum decision-making at all levels.





OUR TEAM

Cube Metal Industries has built an enviable team of creative, passionate and proactive professionals with a diverse background who are encouraged, supported and trained to be the very best in their field. Many of our employees have been with us since established in 2007, providing a wealth of knowledge and experience and allowing Cube Metal Industries to consistently provide building envelope solutions that push the boundaries of design. Each member is devoted to quality design, fabrication and installation of glass products and framing systems in virtually every architectural application. Through quality workmanship, on- time project completion, and trusted relationships, our team of professionals has a strong reputation as one of the top facade contractors in the Kingdom.

Cube Metal Industries leadership team has international experience, and a pedigree and track record that matches anyone in the building envelope system industry. Our leadership team drives in commitment to delivering results while bringing purpose and values to the forefront of our daily activities that are the foundation for our success. Our leadership team is committed to recruiting and developing our workforce to ensure retention and continuity of relationships to our clients. Our ongoing recruitment program ensures a constant injection of fresh thinking and innovation providing the perfect combination for handling the most complex requirements.





OUR FACTORY

The 18,000m² factory is based in Al Khumra, south of Jeddah. By having our own manufacturing and fabrication premises, this gives us the full control of all aspects of quality and delivery secured by ISO9001: 2015 certification. Precision built offsite products require the application of leading-edge technology and contemporary manufacturing processes. We have invested substantially along the years, and our facilities houses state-of-the-art specialist machinery in two production halls.

Our machining facilities are mainly Computerized Numerical Control (CNC) and includes rolling, cutting, preparation, assembly, welding, pressing, crimping, milling, glass sandblasting and automatic insulation glass line. The facility alone is capable of producing up to 80,000m² of high quality curtain walling and 50,000m² of aluminum composite cladding per year. The factory is manned with an experienced workforce, some being in the industry for over 20 years and the knowledge from these men are now being passed on in our newcomers. The machinery and knowledge, combined with a dedicated team committed to safety and quality, mean Cube Metal Industries has the capability to fabricate building envelope systems to satisfy all customer's requirements.



QUALITY POLICY

Cube Metal Industries is certified to ISO9001:2015 Quality. Management Systems for the Fabrication and Installation of Aluminum and Steel works through continuous training and development of our people, processes and polices. The ISO9001:2015 standard contain requirements for the Quality Management System, which is used by Cube Metal Industries to demonstrate its capability to meet client's requirements and for assessment of the system by our own internal auditors and external parties.

The ISO9001 framework governs the management of Cube Metal Industries' business operations. We are committed to continual development and, ISO9001 provides the tools to monitor and feedback information from all areas of the business to ensure a first-class service is maintained. Our in-house specialist and qualified personnel ensure a quality product is delivered to our clients on a regular basis. The core of the Quality Management System encompasses compliance to specifications, consistency in workmanship, improvement in production processes, monitoring of material supplies, and training/ education of personnel.



Cube Metal Industries Quality Policy

CONTEXT OF ORGANIZATION: The core foundation of Cube Metal Industries (CMI) success is based on quality. At CMI, we strive to exceed the demands of our clients for the quality of our products and services. In order to achieve a quality standard that can represent the core values of CMI, the management has developed this Quality Policy to ensure our customers satisfaction by the highest quality and performance through our continuous improvements and innovations.


This Quality Policy is reviewed on regular basis to maintain a progressive quality standard. All CMI employees are committed to deliver the quality products with high standards of performance for our clients. Our Quality policies and customer satisfaction based on the following core principle as follows,

PROCESSES:

- Compliance of the ISO 9001:2015 Quality Management System through our yearly operation, revision and auditing process;

OBJECTIVES:

- Provide adequate resources to establish, implement, maintain and continuously improve the Quality Management System;
- Introduction and implementation of this policy to all employees through inductions, training and leading by example in the workplaces
- Ensure compliance to applicable legal, statutory, regulatory requirements, CMI's policies and procedures;
- Ensure an Integrated Management System is implemented and maintained;
- Promote a performance standard and culture of minimum defects.
- Ensure the effective implementation of the Quality Management System through a program of audits and analysis to verify performance and drive continuous improvement;
- Delivering cost effective and fit for purpose products and services without compromising integrity, quality and safety for being customer focused and strive to achieve customer satisfaction.
- Compliance with all client's specific requirements and specifications.
- Providing quality resources to maintain and continually improve the Management System;
- The Quality Management System undergoes periodic internal and external review for continuous improvement to ensure that our systems are contemporary, compliant and meets our customers and market expectations.



Approved by Gen. Manager



OUR SERVICES

OVERVIEW

As an independent specialist contractor our clients can be confident of receiving a flexible, thought-through building envelope solutions. Cube Metal Industries designs, supplies, and installs high performing façade systems.

We are great collaborators and believe the way we work with our clients is quite unique and strive to get hands-on with projects as early as possible. We welcome the opportunity to work through the design phase with developers, owners, architects and general contractors to help provide the best possible solution to fit your specific needs. We take the time to fully understand their project requirements and put together the right project team to deliver it. The unique element is the experience and quality of our people, together with their technical design and delivery expertise.

For a project to be carried out efficiently the right technicians are of crucial importance, but good project management is of equal importance. Our project managers are skilled in both technical and man management, to ensure the seamless running of your project. The team for every project, is led by a project manager with the relevant technical and site team ensuring Cube Metal Industries is the right partner for you to fulfill your construction projects.

You can rely on Cube Metal Industries' professional service at every stage of your project. Our excellent manufacturing capacity ensures quick delivery and efficient installation of all products. Wherever possible we will carry out the bulk of the assembly works in our factory to ensure quality and high tolerances, which in turn minimizes the installation time on site which improves accuracy

DESIGN & ENGINEERING

The engineering department at Cube Metal Industries comprises qualified personnel who are able to assist with both the technical construction and the aesthetic aspect. We work with our clients to decide upon the most effective and cost efficient design solution. Our In-house team of experts work side-by-side with consultants and architects to create complete comprehensive design solutions.

Our design and engineering team is equipped with the very latest software technology, and is experienced in glass and metal works allowing us to use a holistic approach to our system designs. By working in close partnership with key system suppliers we are able to provide our clients with creative, yet practical design solutions as well as advice on systems choice, taking into account all the design factors which impact on the building envelope. We look beyond the façade systems and provide innovative solutions as a result.

Cube Metal Industries recognizes design is constantly evolving during the engineering and construction phase. To accommodate this, and get the most out of our design, we maintain a dynamic relationship with our clients. We believe communication is extremely important in achieving the best design outcome and as such, conduct frequent design meetings throughout the life of the project.

Once the design phase has reached the optimum solution, our close relationship with global suppliers ensures we are able to construct quality façade products.

FABRICATION

Cube Metal Industries offers quality manufacturing. We have invested substantially in the latest software and hardware systems in metal works, aluminum composite cladding and glass works production, and our manufacturing facilities houses state-of-the-art machinery and technology providing offsite systems and solutions that meet the needs of our customers. Sophisticated software transfers design information directly to our production plant where we are able to manufacture accurate building envelope products. Our excellent manufacturing capacity build on state-of-the-art machinery and skilled workforce produce effective framing components ready for onsite assembly.

Cube Metal Industries team strive to exceed expectations on reliability and delivery. All of our products are manufactured under strict quality management control which is fully compliant with BS EN ISO 9001:2015. Our accredited quality management systems and procedures eradicate onsite variability and ensure lifetime 'in service' performance and durability.



INSTALLATION

Cube Metal Industries installation team has the experience, technology and capabilities to deliver the most challenging project. We maintain a professional and efficient approach both on and off site and work closely with contractors to achieve the client's needs.

Every project we undertake is overseen by an installation project manager to ensure works are completed on time, on budget, and to the best quality standards while guaranteeing the safety of our team members. To achieve it, our planning starts from the very first project meetings and our installation managers are engaged early on the process to ensure their valuable experience is fed into our design, planning and delivery strategies.

OUR BUSINESS PARTNERS

The image displays a grid of logos for various business partners, organized into three main vertical sections. The leftmost section features large logos for SCHÜCO, REYNAERS aluminium, GUTMANN, AluMil, Profils SYSTEMES, GULF EXTRUSIONS CO (LLC) (with Arabic text: شركة الخليج للسحب (ذمم) مجموعة شركات الغرير), BRITAL ALUMINIUM FACADE DESIGNS, and TECHNAL. The middle section contains logos for SAUDI AMERICAN GLASS, SAINT-GOBAIN, Juffali Chemical Products, DORMA, ALUCOBEST ALUMINIUM COMPOSITE PANEL, emmegi, TECHNGLASS, AGC, ALCOBOND, INTRACO, KIN LONG CONSTRUCTION HARDWARE, PILKINGTON, and RC System. The rightmost section includes logos for DEWALT, HILTI, ALPOLIC /fr (with text: INNOVATION • STYLE • PERFORMANCE), Reynobond, GUARDIAN Glass • Automotive • Building Products, TREMCO, somfy, ALUPCO, NGI, DOW CORNING, ALUK, GIESSE, MOMENTIVE, Saudi Rock Wool, GEZE, and a logo with Arabic text: شركة الخليج للسحب (ذمم) مجموعة شركات الغرير.

OUR PRODUCTS

As a specialist building envelope contractor we can provide our clients with a variety of products to suit every project. Our teams are able to provide you with the best products along with technical advice to ensure your project runs smoothly. Our extensive product range includes, but it is not limited to:

- Curtain Wall Systems
- Window and Door Systems
- Sun Shading Systems
- Cladding Systems
- Frameless Systems
- Decorative Systems (e.g. Masharabiyas)
- Skylights
- Canopies

CURTAIN WALL SYSTEMS

Curtain walls are the most airtight and weather resistant cladding and exterior wall system available. Curtain walls are designed to create dramatic but practical and elegant facades for all types of buildings with the option of sloped and facet-shaped glassing whilst allowing maximum light into buildings. We do additionally offer solid panels instead of glass offering versatile and cost effective solutions. Our curtain walls are generally structural systems often eliminating the need for secondary steelwork which can help to reduce overall build costs.

Cube Metal Industries is able to offer both conventional stick system construction curtain wall as well as unitized systems fabricated and pre-assembled at our production facilities. Cube Metal Industries is an authorized installer that offers an extensive, fully-integrated range of standard and custom curtain wall products that offer flexibility of design, outstanding performance and ease of installation. All of the curtain walling facades installed by Cube Metal Industries reflect the latest advances in technology and are compliant and tested to quality standards for weather, wind and thermal performance.



WINDOW & DOOR SYSTEMS

Cube Metal Industries offers a range of windows and doors suitable for the architectural, commercial, public, new build and retail markets available in a wide range of colors and finishes that comply with any client's requirements.

Our catalogue of windows includes, but it is not limited to, open-in/out parallel opening, pivot, tilt and turn, vertical sliding, fixed and top-hung. Doors are available as automatic or manual slide, hinged, swing, sliding or tilt and slide. For both, windows and doors, high performance thermal efficiency can be provided. High security glazing, locking mechanism including security deadlock and hook bolts, dual color options, excellent weather performance are some of the many special features of our systems which are compatible with a wide range of accessories and hardware.

Fully compatible with curtain wall systems; our windows and doors make fabrication and installation a simple, cost effective reality while ensuring design flexibility, durability and fitness for purpose whatever the requirement.

FRAMELESS GLASS SYSTEMS

Frameless and semi-frameless glass systems are flexible solutions that can be designed to suit many applications. Cube Metal Industries frameless glass systems bring the benefits of glass to the building envelope-transparency, day lighting, versatility, efficiency, space saving, and low cost of ownership while being structurally sound. Cube Metal Industries provides stylish frameless solutions for curtain walls (spider fittings, fin glass and cable- net systems), sliding doors, entrances canopies, balustrades, internal partitions and a wide range of architectural options.

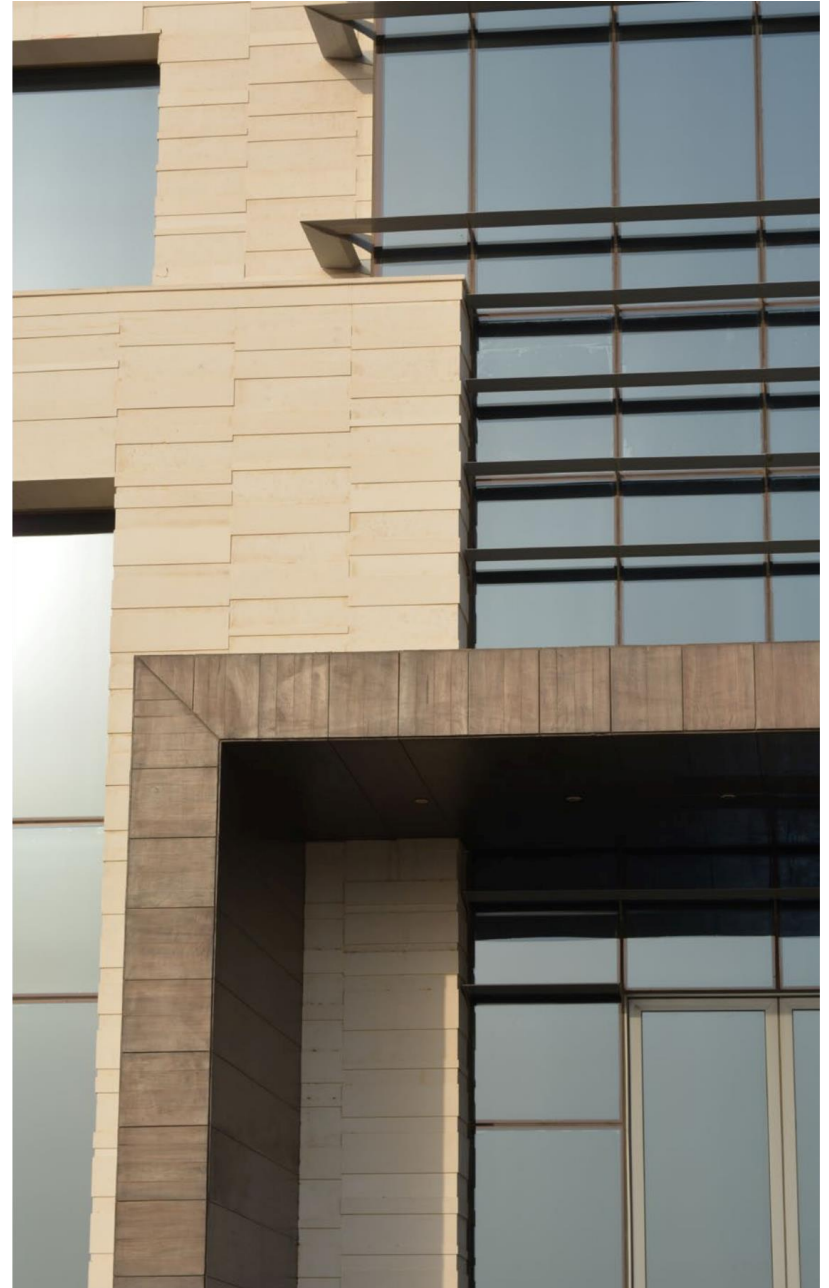




ALUMINUM COMPOSITE CLADDING SYSTEMS

Aluminum composite cladding is the material of choice when panel flatness and a high performance finish are a must. Made from two sheets of aluminum bonded to a thermoplastic core, aluminum composite cladding is strong yet lightweight, and with Cube Metal Industries' knowledge expertise and equipment can be fabricated into components and systems that outperform other cladding materials in most situations.

Cube Metal Industries offers a complete line of aluminum composite cladding products, systems and services guaranteeing fast and economical installation. The panels are available in a wide range of insulation thicknesses, coatings and finishes to offer a flexible and aesthetically pleasing solution for virtually any application. Aluminum composite cladding is durable, durable, hygienic, low maintenance and recyclable. Moreover, it can be fitted with insulation on the back or underneath in order to improve its energy efficiency





SOLAR SHADING SYSTEMS

One of the most important challenges of energy efficient concepts in buildings is to control the entrance of daylight. It is important to find the right balance in allowing sunlight to enter, while at the same time avoiding overheating of the building. The most efficient way to achieve this is by applying external sun shading systems. By implementing Cube Metal Industries systems into building, clients reduce the need for air conditioning without compromising the entrance of daylight, providing in parallel aesthetic appeal to the building exterior. Cube Metal Industries' solar shading systems generally consist of aluminum blades with ease of erection in mind which translates into dramatically lower installation costs. Our systems are offered in an endless choice of colors that can be installed vertically or horizontally to meet design specifics and requirements.



OTHER SYSTEMS

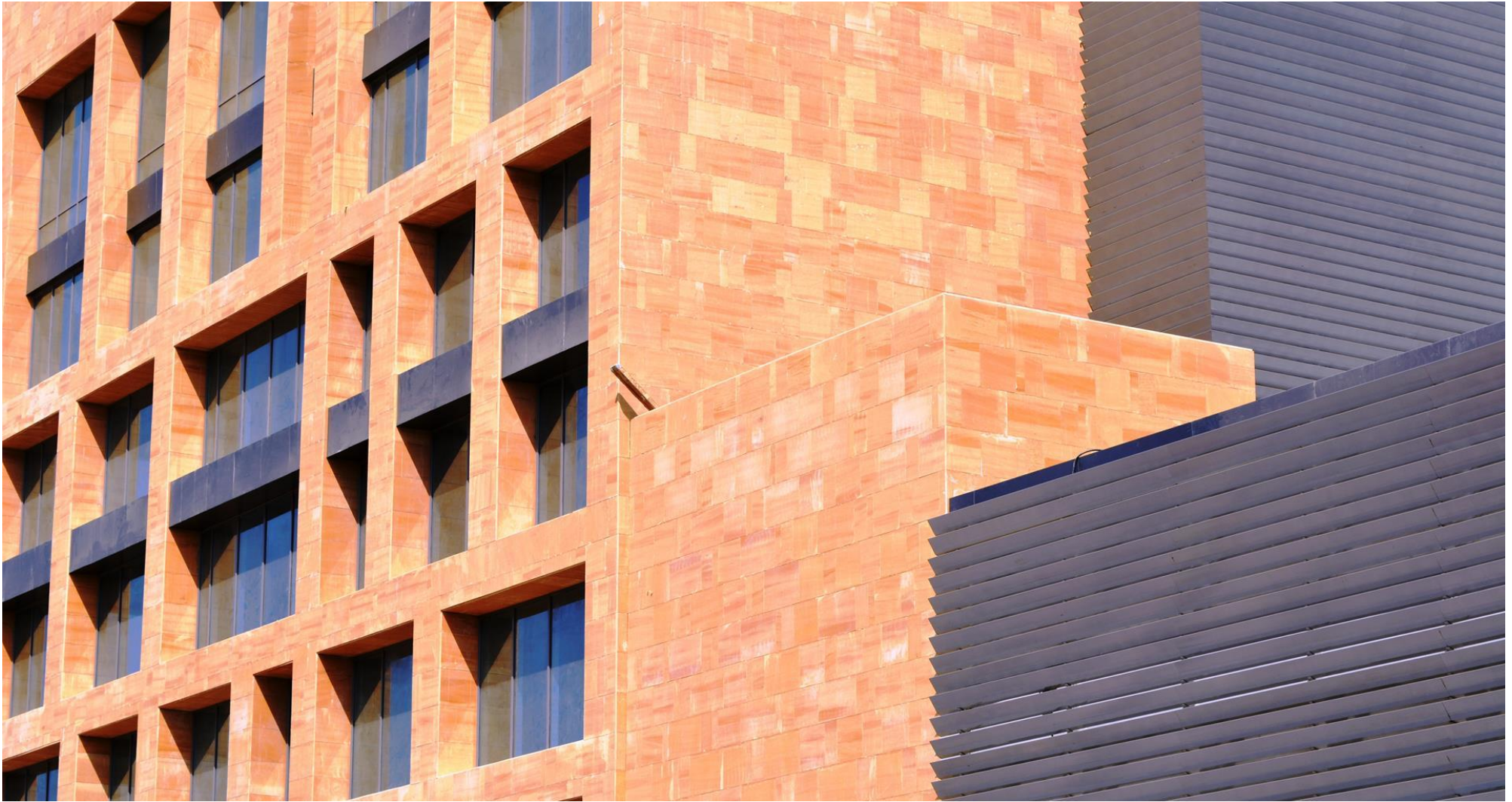
In addition to all the before described systems, Cube Metal Industries also supply a range of associated products that help clients to complete the building envelope from a single source. These include skylights, canopy solutions, steelwork, balustrades and handrails as well as decorative systems such as mashabiyas.



SIGNATURE PROJECTS

Project	Location	Client	Value(SR)	Scope of Work
AL THURAYA COLLEGES MAIN BUILDING	JEDDAH	SPECIALIZED CONTRACTING CO.	22,700,000	ALUMINUM AND GLASS WORKS
MARRIOTT HOTEL	JEDDAH	ABDULMOHSIN AL HOKAIR HOLDING	22,300,000	ALUMINUM AND GLASS WORKS
AL KHAIR TOWER	JEDDAH	RUWAD CIVIL CONSTRUCTION	14,300,000	ALUMINUM AND GLASS WORKS
JEDDAH GATE LOT E5 & TOWERS E8, E9, E10	JEDDAH	SAUDI ARABIAN CONSTRUCTION CO.	12,900,000	ALUMINUM AND GLASS WORKS
FARSI SEVEN RESIDENTIAL TOWER	JEDDAH	SPECIALIZED CONTRACTING CO.	12,300,000	ALUMINUM AND GLASS WORKS
C180 TOWER (MELHEM)	JEDDAH	RETAJ CONSULTANTS	9,100,000	ALUMINUM AND GLASS WORKS
BMW, JLR, GENESIS SHOWROOM	JEDDAH	MOHAMED YOUSUF NAGHI & BROTHERS GROUP	7,000,000	ALUMINUM AND GLASS WORKS
HARAMAIN HIGH SPEED RAILWAY BUILDING	JEDDAH	COPASA ARABIA CO. LTD.	4,500,000	ALUMINUM AND GLASS WORKS
SAUDI AIRLINES CARGO	JEDDAH	AL BAWANI CO.	4,500,000	ALUMINUM AND GLASS WORKS
PARK INN RADISSON	JEDDAH	SAAD AL HARTHY GROUP	3,400,000	ALUMINUM AND GLASS WORKS
TAIF MUNICIPALITY BUILDING	TAIF	MOBCO GEN. CON	17,100,000	ALUMINUM AND GLASS WORKS
RIYADH METRO PACK 3 LINE 4 5 6	RIYADH	FAST CONSORTIUM LLC	39,000,000	INTERNAL WORKS AND SKYLIGHT
RIYADH METRO LINE 3 CENTRAL STABLING	RIYADH	AL HASHMIAH CONTRACTING CO	15,200,000	INTERNAL ALUMINUM WORKS, LOUVERS & ALUMINUM FINS
SAUDI ARAMCO INNOVATION CENTER	DAMMAM	AL BAWANI CO.	8,600,000	ALUMINUM AND GLASS WORKS
MAKKAH BUS DEPOT BUILDINGS	MAKKAH	NESMA TRADING COMPANY.	4,750,000	ALUMINUM AND GLASS WORKS





HEAD OFFICE

Tel.: +966 12 652 4005
+966 12 652 4048

Fax: +966 12 652 3914

Email: info@cubemetal.com

P.O. Box 17851 / JEDDAH 21494 / SAUDI ARABIA

www.cubemetal.com